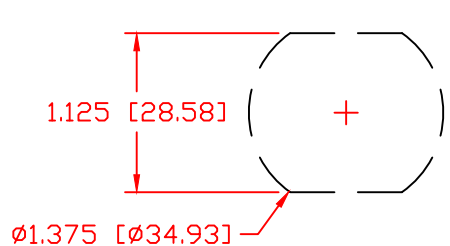


THE INFORMATION CONTAINED IN THIS DRAWING IS THE SOLE PROPERTY OF VTE INCORPORATED. ANY REPRODUCTION IN PART OR WHOLE WITHOUT THE WRITTEN PERMISSION OF VTE INCORPORATED IS PROHIBITED. VTE MAKES NO WARRANTY, EXPRESSED OR IMPLIED, AS TO THE SUITABILITY OF A PRODUCT FOR ANY INTENDED USE. THE CUSTOMER SHALL BEAR THE SOLE RESPONSIBILITY OF DETERMINING THE SUITABILITY OF ANY VTE PRODUCT FOR ITS END USE.

LTR.	REVISIONS	DATE	INT.
	PRELIMINARY DRAWING FOR APPROVAL	11-12-20	EJE

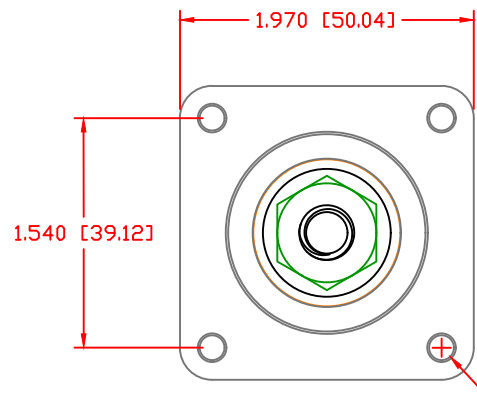
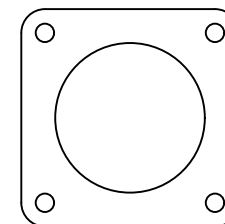
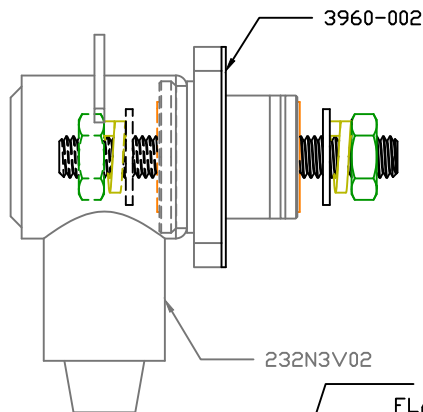
USE GREENLEE PUNCH  
ASSEMBLY #60098  
FOR PANEL CUTOUT

P/N 3960-002  
.062 THICK CF 4480 81 DUROMETER  
FIBERGLASS REINFORCED SILICONE  
PRESS PAD SEALING GASKET



ASSEMBLY CCFB108N02W  
CONSIST OF :

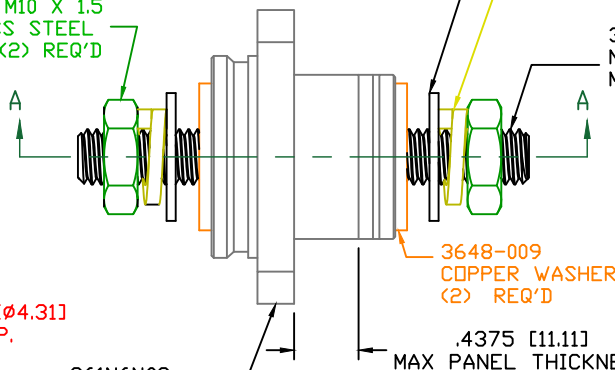
- 1-CCFB108N02  
POWER BUSHING
- 1-3960-002  
SEALING GASKET
- 1-232N3V02  
INSULATOR BOOT



3845-000 M10 X 1.5  
STAINLESS STEEL  
JAM NUT (2) REQ'D

Ø0.170 [Ø4.31]  
TYP.

361N6N02  
GLASS FILLED  
NYLON BUSHING



3646-000  
STAINLESS STEEL  
FLAT WASHER (2) REQ'D

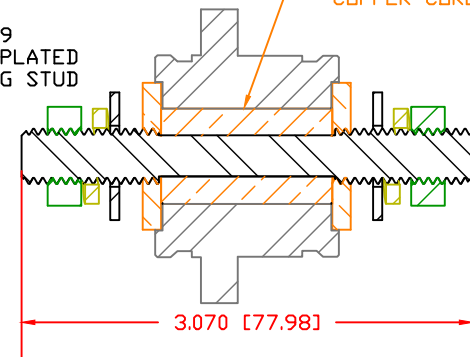
3638-M LOCK WASHER  
STAINLESS STEEL (2) REQ'D

3742-009  
NICKEL PLATED  
MOUNTING STUD

3648-009  
COPPER WASHER  
(2) REQ'D

.4375 [11.11]  
MAX PANEL  
THICKNESS

3864-002  
COPPER CORE



SECTION A-A

SCALE FACTOR : NONE  
ALL DIMENSIONS GIVEN AS: in [mm]  
TOLERANCES UNLESS OTHERWISE SPECIFIED :  
MOLDED PARTS: ±.030" [±0.8mm]  
HARDWARE ITEMS: ±.010" [±0.25mm]


MAXIMUM FASTENER TORQUES:  
JAM NUTS: 212 IN-LBS [24.0 Nm]

CURRENT CARRYING CAPACITY:  
DUTY CYCLE:  
CURRENT CAPACITY:  
TEMPORARY MAX (12 MINUTES)

80%  
7.2 Kw (600 AMP @ 12VDC)  
9.0 Kw (750 AMP @ 12VDC)

MATERIAL PART NO:  
MATERIAL:  
VENDOR PART NO:  
SPECIFIC GRAVITY:  
MELTING TEMP:  
U.L. RATING:

7111210502  
GLASS FILLED NYLON  
HYLON N2015 HL NAT  
1.23  
515 F [268 C]  
UL 94 HB

		<b>VTE Incorporated</b> 5437 Robinson Road, P.O. Box 790 Pellston, Michigan 49769 Telephone: 1-800-527-9256, 231-539-8000 FAX: 231-539-0914	
		REF:	DATE: 11-12-2020
TITLE: 10MM WEATHERPROOF PANEL MOUNT POWER BUSHING, HIGH CAPACITY			
MATERIAL: GLASS FILLED NYLON		PART NO. CCFB108N02W	
COLOR: RED	DRG CLASS: PRELIM		