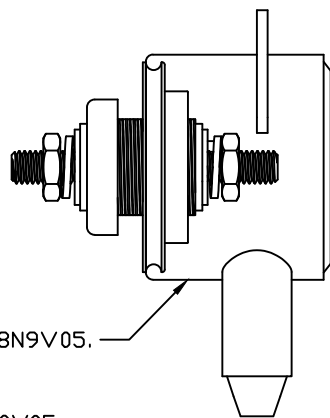
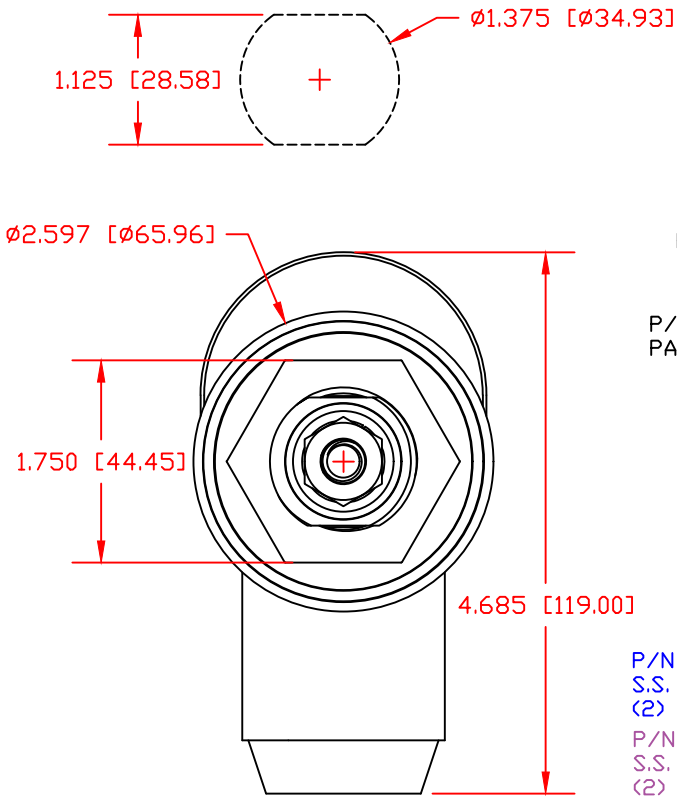


THE INFORMATION CONTAINED IN THIS DRAWING IS THE SOLE PROPERTY OF VTE INCORPORATED. ANY REPRODUCTION IN PART OR WHOLE WITHOUT THE WRITTEN PERMISSION OF VTE INCORPORATED IS PROHIBITED. VTE MAKES NO WARRANTY, EXPRESSED OR IMPLIED, AS TO THE SUITABILITY OF A PRODUCT FOR ANY INTENDED USE. THE CUSTOMER SHALL BEAR THE SOLE RESPONSIBILITY OF DETERMINING THE SUITABILITY OF ANY VTE PRODUCT FOR ITS END USE.

LTR.	REVISIONS	DATE	INT.
	PRELIMINARY DRAWING FOR APPROVAL	11-12-20	EJE

USE GREENLEE PUNCH
ASSEMBLY #60098
FOR PANEL CUTOUT



P/N 258N9V05.

P/N 358N0V05
PANEL SEALING NUT

P/N 360N9N05
GFN BUSHING

P/N 3648-008
COPPER WASHER
(2) PCS.

P/N 359N0N05
PANEL NUT

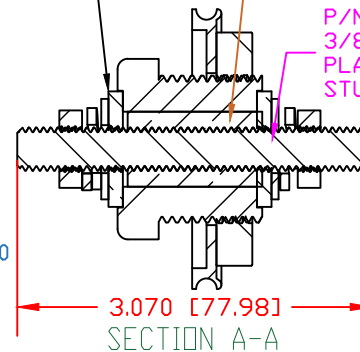
P/N 3863-002
COPPER CORE

P/N 3742-007
3/8-16 NICKEL
PLATED MOUNTING
STUD

P/N 3844-012
S.S. JAM NUT
(2) PCS.

P/N 3646-000
S.S. FLAT WASHER
(2) PCS.

P/N 3638-000
S.S. LOCK
WASHER
(2) PCS.



SECTION A-A

SCALE FACTOR : NONE
ALL DIMENSIONS GIVEN AS: in [mm]
TOLERANCES UNLESS OTHERWISE SPECIFIED :
MOLDED PARTS: $\pm 0.30^*$ [$\pm 0.8\text{mm}$]
HARDWARE ITEMS: $\pm 0.10^*$ [$\pm 0.25\text{mm}$]

MAXIMUM FASTENER TORQUES:
JAM NUTS: 212 IN-LBS [24.0 Nm]
SEALING NUT: 120 IN-LBS [13.56 Nm]

CURRENT CARRYING CAPACITY:
DUTY CYCLE: 80%
CURRENT CAPACITY: 7.2 Kw (600 AMP @ 12VDC)
TEMPORARY MAX (12 MINUTES): 9.0 Kw (750 AMP @ 12VDC)

MATERIAL PART NO: 7111210505
MATERIAL: GLASS FILLED NYLON
VENDOR PART NO: NYLON N2015 HL NAT
SPECIFIC GRAVITY: 1.23
MELTING TEMP: 515 F [268 C]
U.L. RATING: UL 94 HB



VTE Incorporated
5437 Robinson Road, P.O. Box 790
Pellston, Michigan 49769
Telephone: 1-800-527-9256, 231-539-8000
FAX: 231-539-0914

REF:	DATE: 11-12-2020	DRN BY: EJE CHK'D BY: PJK	WEIGHT:
TITLE: 3/8" POWER BUSHING, COPPER CORE, HIGH CAPACITY			
MATERIAL: GLASS FILLED NYLON		PART NO. CCB378N05W	
COLOR: YELLOW	DRG CLASS PRELIM		