



+61 (0)7 3808 8115
+61 413 123 520

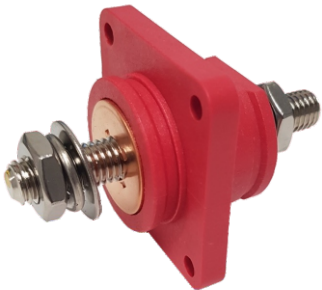
Your home for high quality Terminal Insulators and Electro Mechanical components.



THRU PANEL POWER BUSINGS

Pass current through a panel, safely and efficiently.

COPPER CORE FLANGE BUSHING



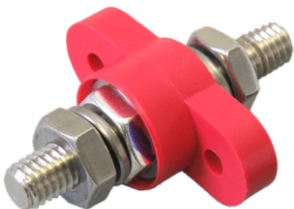
- ◆ Double D or Round Cutout
- ◆ 450 Amp @ 12VDC (550 Peak)
- ◆ Retainer Groove for Insulators on Both Sides
- ◆ IP65 with 232 Series Insulators
- ◆ Post Sizes Available: 1/2", 3/8", M10, M12
- ◆ Several Weatherproof Options Available

COPPER CORE POWER BUSHING



- ◆ Double D Cutout
- ◆ 450 Amp @ 12VDC (550 Peak)
- ◆ Insulator Solution Available (Weatherproof Model)
- ◆ IP65 with 258 Series Insulators
- ◆ Post Sizes Available: 1/2", 3/8", M10, M12
- ◆ Some Models Available in Heavy Amp Rating

PASS THRU POWER POST



- ◆ Round Hole Cutout
- ◆ 2 Mount Points
- ◆ 250 Amp @ 12VDC
- ◆ Insulator Solutions Available
- ◆ Post Sizes Available: 1/4", 5/16", 3/8", M8, M10

SALES@VTEAUSTRALIA.COM

WWW.VTEAUSTRALIA.COM

