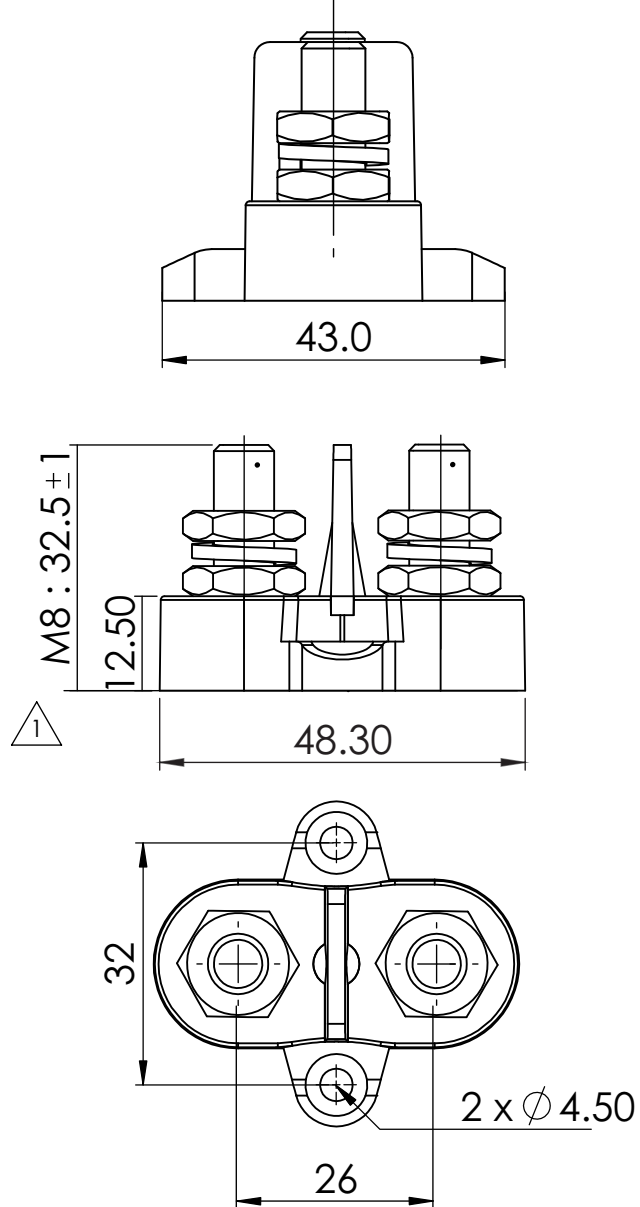
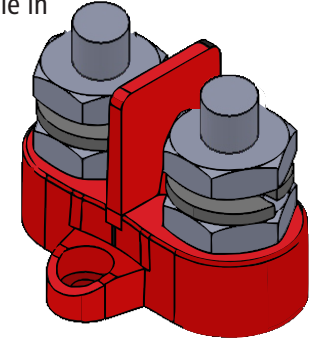


TECHNICAL DRAWING



TECHNICAL DATASHEET

Our Small Base Single & Dual Power Posts are compact in design and ideal for creating a centralised power distribution or grounding point. Several configurations are available in order to suit a variety of applications.



SPECIFICATIONS


PART NUMBER:	DESCRIPTION:	POST SIZE:	COLOUR:
SBRD_DPDP-M8	Small Base - Dual Power Post with Isolating Plate	M8	RED
Base Material:	Nylon, Glass Fibre Reinforced		
Stud Material:	Stainless Steel		
Screw Nuts Material:	Nickel-Plated Brass		
Max Operating Voltage:	DC 48V		
Max Amp per Circuit:	Determined by Wire Size Connected		

FEATURES

- Allows terminating of heavy-duty cables for one or more connections
- Available in Red or Black
- Glass Fibre reinforced Nylon base ensures great mechanical strength and durability
- Insulated Base ensures no current leakage to mounting positions
- Heavy Duty Terminal Studs (up to M10)
- Small Base allows for easy installation in tight spaces



Unit 3/15 Parramatta Road, Underwood, QLD Australia 4119
E: sales@vteaustralia.com P: +61 (0)7 3290 3116

DATE:	2017.06.05	TITLE:	TERMINAL STUDS - SMALL BASE - DUAL POST DIVIDED M8							
CHK:	DEREK	UNIT:	m/m	REV:	0	Size	0.5-6	>6-30	>30-120	>120-400
		PROJ.:	3			Tol	+/-0.05	+/-0.1	+/-0.15	+/-0.2
DWG No.:	Bf411	RATIO:	1:1	COLOUR:	RED	REVISION:  Screw nuts material Height change(mm) M8: 31 +/-1 to 32.5 +/-1				
		DO NOT SCALE DRAWING								