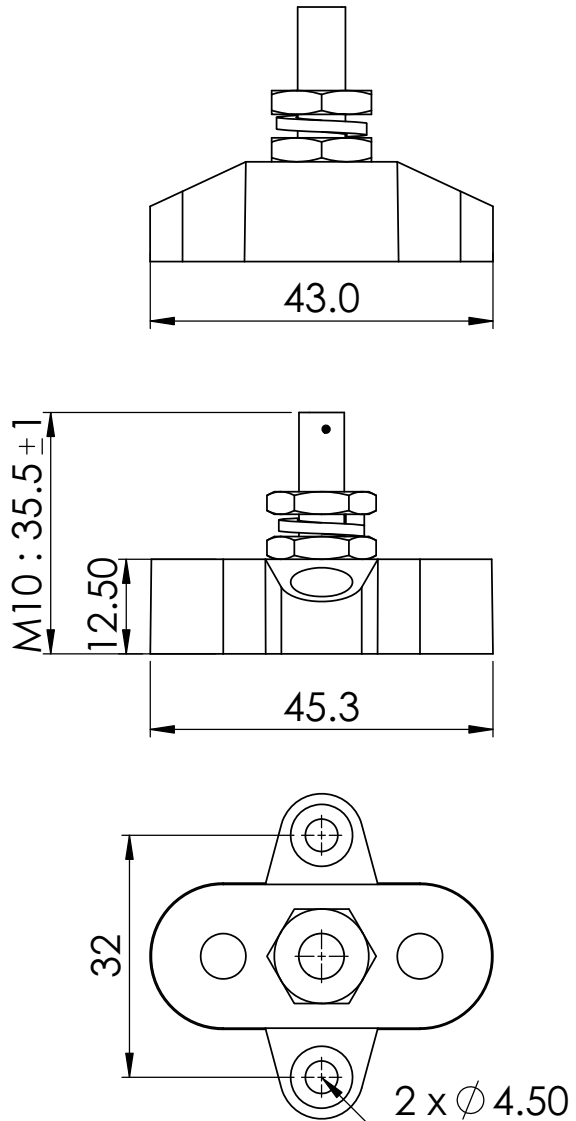
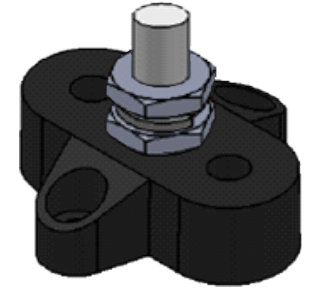


## TECHNICAL DRAWING



## TECHNICAL DATASHEET

Our Small Base Single & Dual Power Posts are compact in design and ideal for creating a centralised power distribution or grounding point. Several configurations are available in order to suit a variety of applications.



### SPECIFICATIONS

PART NUMBER:	DESCRIPTION:	POST SIZE:	COLOUR:
SBBK_SP-M10	Small Base - Single Power Post	M10	BLACK
Base Material:		Nylon, Glass Fibre Reinforced	
Stud Material:		Stainless Steel	
Screw Nuts Material:		Nickel-Plated Brass	
Max Operating Voltage:		DC 48V	
Max Amp per Circuit:		Determined by Wire Size Connected	

### FEATURES

Allows terminating of heavy-duty cables for one or more connections

Available in Red or Black

Glass Fibre reinforced Nylon base ensures great mechanical strength and durability

Insulated Base ensures no current leakage to mounting positions

Heavy Duty Terminal Studs (up to M10)

Small Base allows for easy installation in tight spaces



Unit 3/15 Parramatta Road, Underwood, QLD Australia 4119  
E: sales@vteaustralia.com P: +61 (0)7 3290 3116

DATE:	2017.03.01	TITLE:	TERMINAL STUDS - SMALL BASE - SINGLE POST M10							
CHK:	DEREK	UNIT:	m/m	REV:	0	Size	0.5-6	>6-30	>30-120	>120-400
		PROJ.:	3			Tol	+/-0.05	+/-0.1	+/-0.15	+/-0.2
DWG No.:	Bf411	RATIO:	1:1	COLOUR:	BLACK	REVISION:				
		DO NOT SCALE DRAWING								
						SBBK_SP-M10_TechSheet_Ver.1				