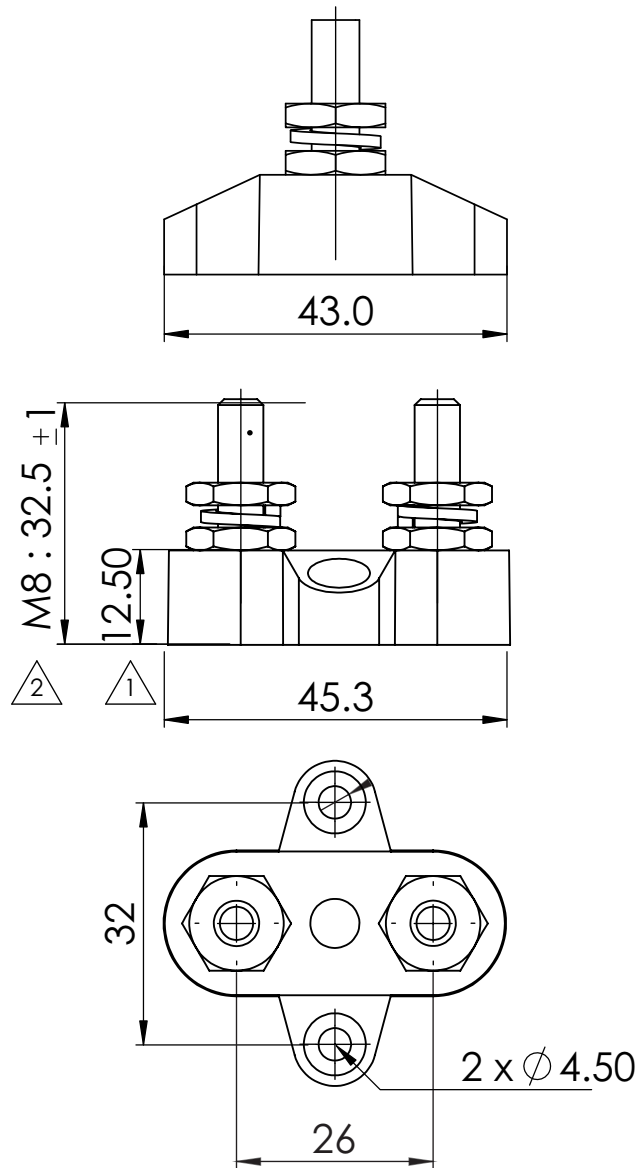
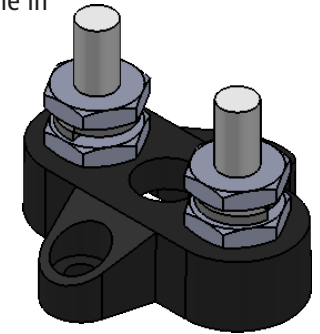


TECHNICAL DRAWING



TECHNICAL DATASHEET

Our Small Base Single & Dual Power Posts are compact in design and ideal for creating a centralised power distribution or grounding point. Several configurations are available in order to suit a variety of applications.



SPECIFICATIONS

PART NUMBER:	DESCRIPTION:	POST SIZE:	COLOUR:
SBBK_DP-M8	Small Base - Dual Power Post	M8	BLACK
Base Material:	Nylon, Glass Fibre Reinforced		
Stud Material:	Stainless Steel		
Screw Nuts Material:	Nickel-Plated Brass		
Max Operating Voltage:	DC 48V		
Max Amp per Circuit:	Determined by Wire Size Connected		

FEATURES

Allows terminating of heavy-duty cables for one or more connections

Available in Red or Black

Glass Fibre reinforced Nylon base ensures great mechanical strength and durability

Insulated Base ensures no current leakage to mounting positions

Heavy Duty Terminal Studs (up to M8)

Small Base allows for easy installation in tight spaces



Unit 3/15 Parramatta Road, Underwood, QLD Australia 4119
E: sales@vteaustralia.com P: +61 (0)7 3290 3116

DATE:	2017.06.03	TITLE:	TERMINAL STUDS - SMALL BASE - DUAL POST M6							
CHK:	DEREK	UNIT:	m/m	REV:	0	Size	0.5-6	> 6-30	> 30-120	> 120-400
DWG No.:	Bf412	PROJ.:	3			Tol	+/-0.05	+/-0.1	+/-0.15	+/-0.2
		RATIO:	1:1	COLOUR:	BLACK	REVISION: Base Material Height change 11.0mm to 12.5mm				
		DO NOT SCALE DRAWING				Screw nuts material Height change (mm) M6: 30 +/-1 to 31.5 =/-1 M8: 31 +/-1 to 32.5 =/-1				