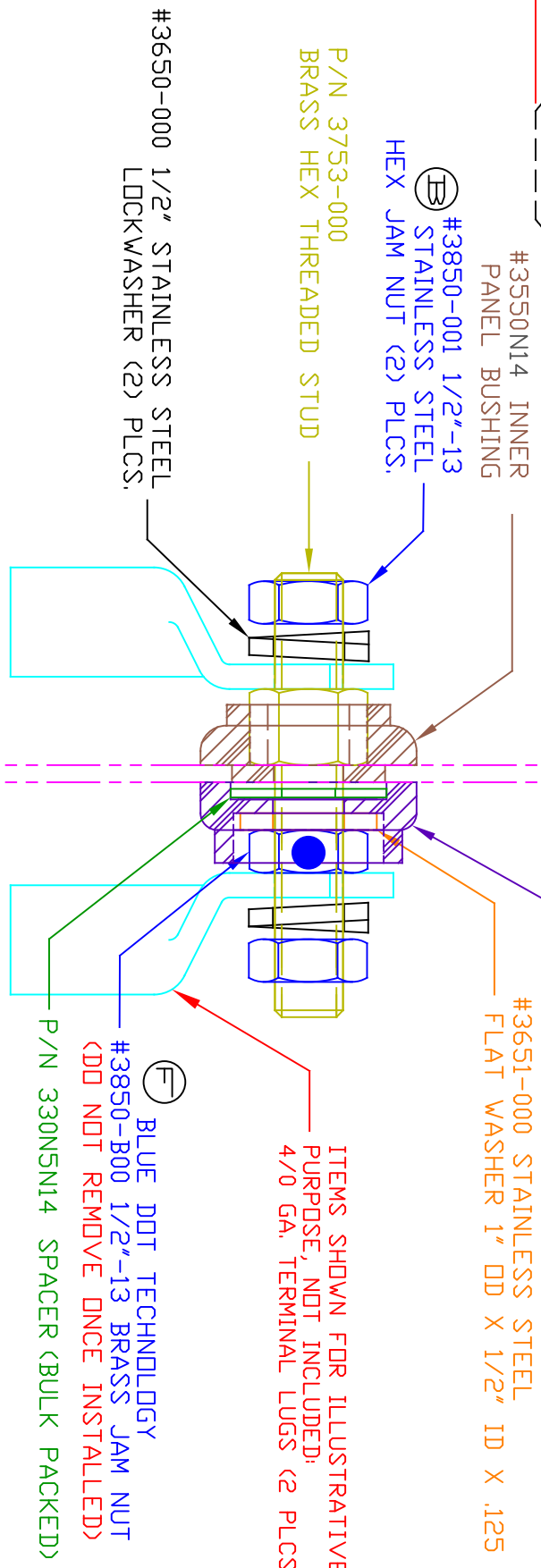
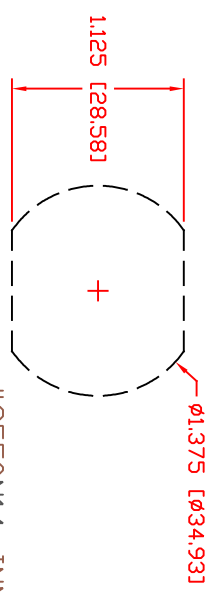


THE INFORMATION CONTAINED IN THIS DRAWING IS THE SOLE PROPERTY OF VTE INCORPORATED. ANY REPRODUCTION IN PART OR WHOLE WITHOUT THE WRITTEN PERMISSION OF VTE INCORPORATED IS PROHIBITED. VTE MAKES NO WARRANTY, EXPRESSED OR IMPLIED, AS TO THE SUITABILITY OF A PRODUCT FOR ANY INTENDED USE. THE CUSTOMER SHALL BEAR THE SOLE RESPONSIBILITY OF DETERMINING THE SUITABILITY OF ANY VTE PRODUCT FOR ITS END USE.

USE GREENLEE PUNCH
ASSEMBLY #60098
FOR PANEL CUTOUT



LTR	REVISIONS	DATE	INT.
A	ADDED #3652 AND #3653	1-24-03	BRH
B	3850-000 WAS 3850, ADDED 3850-001 2 PLCS.	3-02-07	BRH
C	ADDED CALLOUT FOR SPACER AND INSTRUCTION SHEET	5-01-07	BRH
D	REVISED TORQUE RECOMMENDATIONS	6-08-10	BRH
E	ADDED RECOMMENDED PANEL THICKNESS	8-30-17	RAS
F	PART NUMBER REVISED FROM 3850-000	9-08-17	RAS
G	ADDED "BULK PACKED" NOTE	2-6-24	RAS

ITEMS SHOWN FOR ILLUSTRATIVE PURPOSE, NOT INCLUDED:
4/0 GA. TERMINAL LUGS (2 PLCS)

(F) BLUE DOT TECHNOLOGY
#3850-B00 1/2"-13 BRASS JAM NUT
(~~DD~~ NOT REMOVE DNCE INSTALLED)

(E) P/N 330N5N14 SPACER (BULK PACKED)

#3450N14 OUTER PANEL BUSHING
#3651-000 STAINLESS STEEL
FLAT WASHER 1" DD X 1/2" ID X .125

(E) RECOMMENDED FOR PANEL THICKNESS RANGE OF MINIMUM 0.055" - MAXIMUM 0.085" [1.39mm] - [2.15mm]

MATERIAL PART NO:
111210514UL
GLASS FILLED NYLON
VENDOR PART NO:
HYLON N2015 HL BK
SPECIFIC GRAVITY:
1.23
MELTING TEMP:
515 F [268 C]
UL RATING:
UL 94 HB

MAXIMUM AMPERAGE: 500 AMPS @ 12VDC
MAXIMUM RECOMMENDED FASTENER TORQUE:
BRASS JAM NUT: 240 IN./LBS. [27.1 Nm]
STAINLESS STEEL JAM NUT: 180 IN./LBS. [20.3 Nm]
INCLUDES P-16808110001 BLUE DOT MULTI LABEL, 1 PER CONTAINER

SCALE FACTOR : NONE
ALL DIMENSIONS GIVEN AS: In [mm]
TOLERANCES UNLESS OTHERWISE SPECIFIED :
MOLDED PARTS: ±.030" [±0.8mm]
HARDWARE ITEMS: ±.010" [±0.25mm]

VTE Incorporated
5437 Robinson Road, P.O. Box 790
Pellston, Michigan 49769
Telephone: 1-800-527-9256, 231-539-8000
FAX: 231-539-0914

REF:	DATE:	DRN BY:	RAS	WEIGHT:
CUSTOMER DIMS	1-02-03	CHK'D BY:	PJK	
TITLE: POWER BUSHING 1/2" STUD				
MATERIAL: GLASS FILLED NYLON			PART NO: 7B5050N14	
COLOR: BLACK	DRG CLASS	REV G		